



ISRO-IRNSS-PER-20-3

NavIC (IRNSS)
STANDARD POSITIONING SERVICE
PERFORMANCE REPORT

JULY-SEPTEMBER 2020

SATELLITE NAVIGATION PROGRAM
U.R. RAO SATELLITE CENTRE
INDIAN SPACE RESEARCH ORGANIZATION

CONTENTS

1.	INTRODUCTION.....	05
1.1	Introduction.....	05
1.2	Performance Indicators.....	05
2.	SOUTHERN REGION.....	06-08
2.1	Signal in Space Accuracy.....	06
2.2	Satellite Availability.....	07
2.3	Dilution of Precision Statistics.....	07
2.4	Carrier to Noise Ratio.....	08
3.	WESTERN REGION.....	09-11
3.1	Signal in Space Accuracy.....	09
3.2	Satellite Availability.....	10
3.3	Dilution of Precision Statistics.....	10
3.4	Carrier to Noise Ratio.....	11
4.	CENTRAL REGION.....	12-14
4.1	Signal in Space Accuracy.....	12
4.2	Satellite Availability.....	13
4.3	Dilution of Precision Statistics.....	13
4.4	Carrier to Noise Ratio.....	14
5.	NORTHERN REGION.....	15-17
5.1	Signal in Space Accuracy.....	15
5.2	Satellite Availability.....	16
5.3	Dilution of Precision Statistics.....	16
5.4	Carrier to Noise Ratio.....	17
6	EASTERN REGION.....	18-20
6.1	Signal in Space Accuracy.....	18
6.2	Satellite Availability.....	19
6.3	Dilution of Precision Statistics.....	19
6.4	Carrier to Noise Ratio.....	20

LIST OF FIGURES

Figure 1: Position accuracy across southern region	6
Figure 2: Percentage availability of number of SVs for SPS service in southern region	7
Figure 3: DOP statistics across southern region	7
Figure 4: Received C/N_0 across southern region	8
Figure 5: Position Accuracy across western region	9
Figure 6: Percentage availability of number of SVs for SPS service in western region	10
Figure 7: DOP statistics across western region	10
Figure 8: Received C/N_0 across western region	11
Figure 9: Position Accuracy across central region	12
Figure 10: Percentage availability of number of SVs for SPS service in central region	13
Figure 11: DOP statistics across central region	13
Figure 12: Received C/N_0 across central region	14
Figure 13: Position Accuracy across northern region	15
Figure 14: Percentage availability of number of SVs for SPS service in northern region	16
Figure 15: DOP statistics across northern region	16
Figure 16: Received C/N_0 across northern region	17
Figure 17: Position Accuracy across eastern region	18
Figure 18: Percentage availability of number of SVs for SPS service in eastern region	19
Figure 19: DOP statistics across eastern region	19
Figure 20: Received C/N_0 across eastern region	20

LIST OF TABLES

Table 1: Performance Indicators for NavIC (IRNSS).....	5
--	---

ABBREVIATIONS

SPS	Standard Positioning Service
HPE	Horizontal Position Error
PE	Position Error
CEP	Circular Error Probability
DRMS	Distance Root Mean Square
SV	Space Vehicle
NSAT	Number of Satellites
DOP	Dilution Of Precision

INTRODUCTION

1.1 INTRODUCTION

The performance of the Signals In Space (SIS), broadcasted by NavIC (IRNSS) system, is continuously being evaluated for both single and dual frequency users across various locations within the service area. The NavIC (IRNSS) SPS service performance in dual frequency mode for the months of July, August and September 2020 has been provided in this document.

1.2 PERFORMANCE INDICATORS

Table 1 describes the various parameters considered as the indicators of performance.

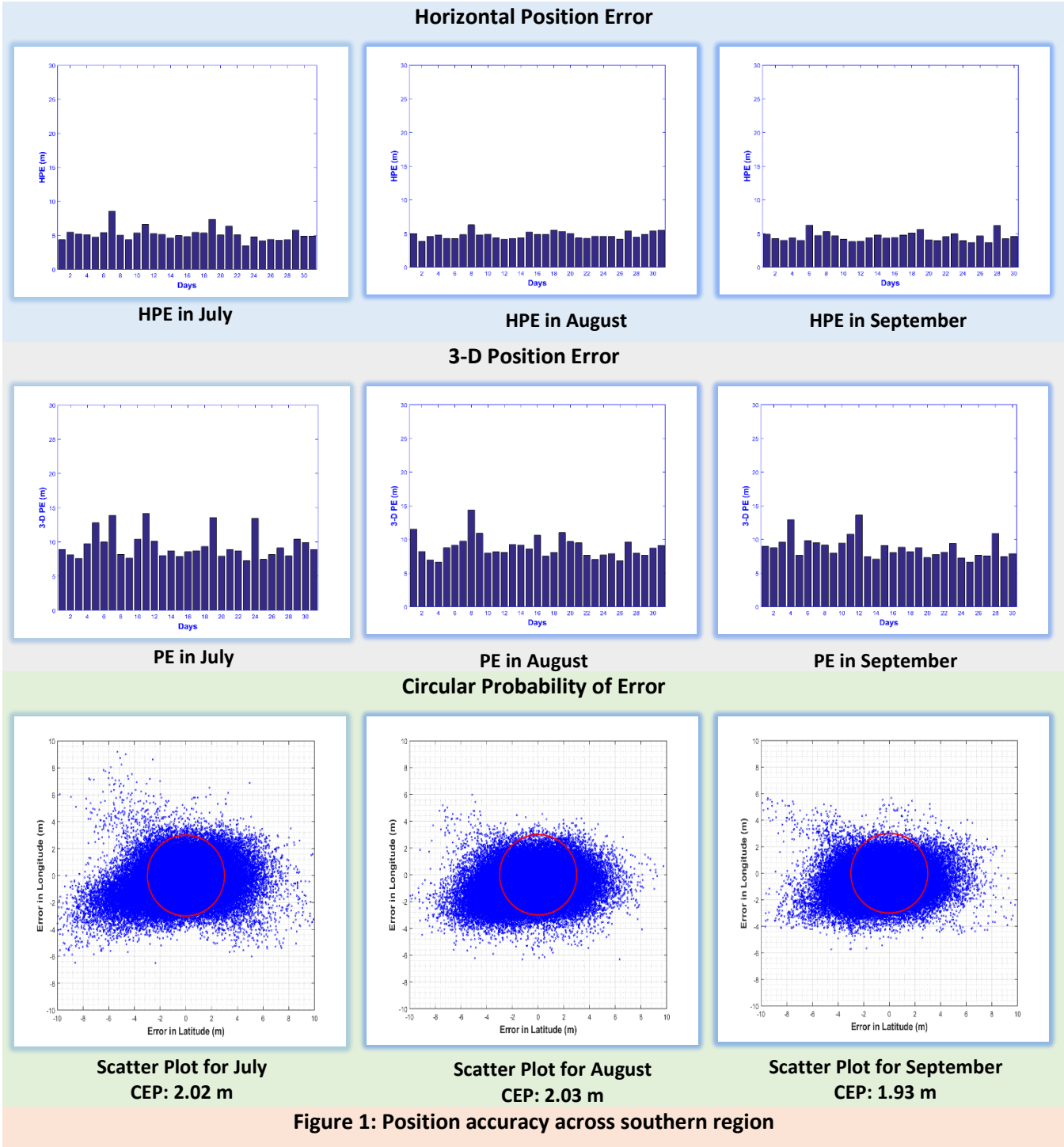
Table 1: Performance Indicators for NavIC (IRNSS)		
Position Accuracy	Horizontal Position Error (HPE) 3-D Position Error Circular Error Probability (CEP)	HPE is two dimensional and can be quantified in terms of error in latitude and longitude. It is calculated as twice the distance-root-mean-square (2drms) with the probability of 95% in this report. 3-D Position Error describes the overall accuracy by combining the effects of horizontal as well as vertical accuracy. The values taken are 2-sigma with 95% probability. CEP is the radius of a circular region, defined in such a way that, the probability of computed estimates falling inside this region is 50%. CEP can be computed from the scatter plot of latitudinal and longitudinal errors.
Availability	Percentage availability of SVs	The availability of service is computed at any user location as the percentage of time an SV can be used for position computation. This metric has been calculated by examining the status of Alert flag and URE index of each SV at every 30 s interval.
Carrier-to-Noise ratio	Received C/N ₀ in L5 band Received C/N ₀ in S band	
Satellite Geometry	Dilution of Precision	

NOTE:

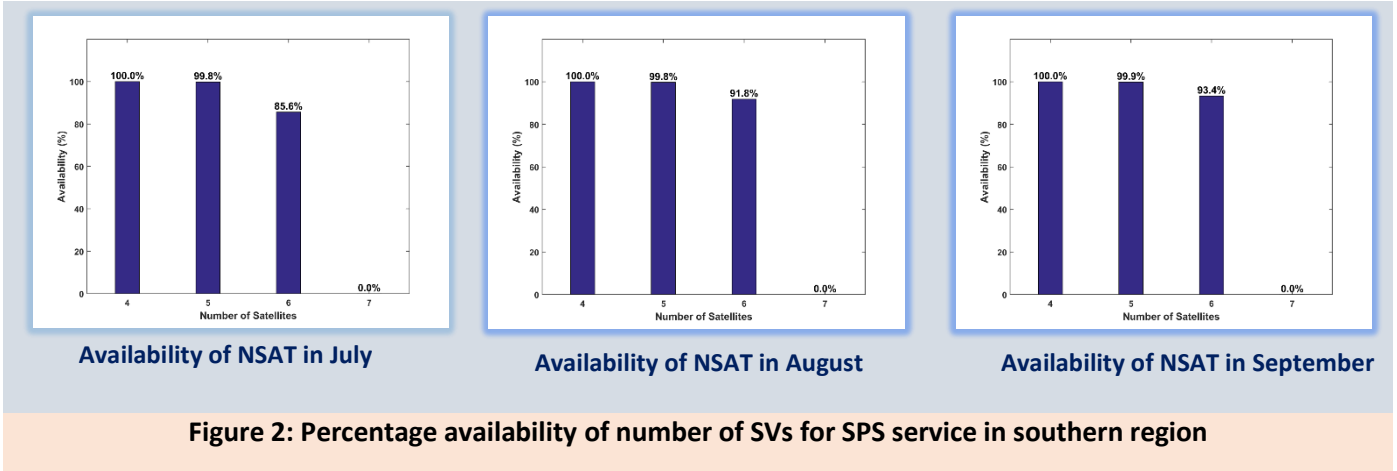
IRNSS 1G is not available for performance evaluation since October 05, 2019.

SOUTHERN REGION

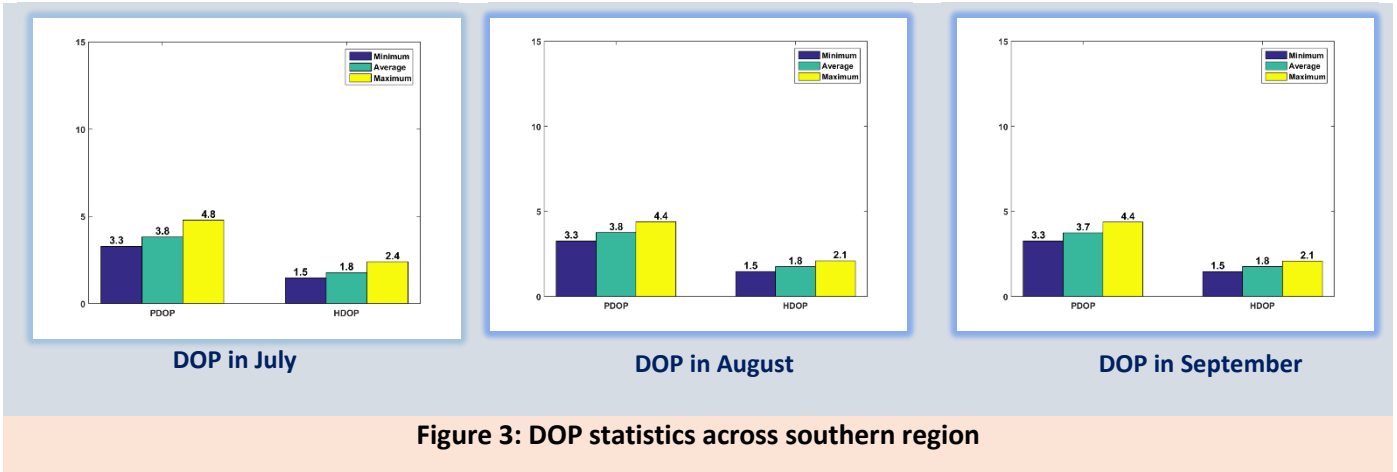
2.1. SIGNAL IN SPACE ACCURACY



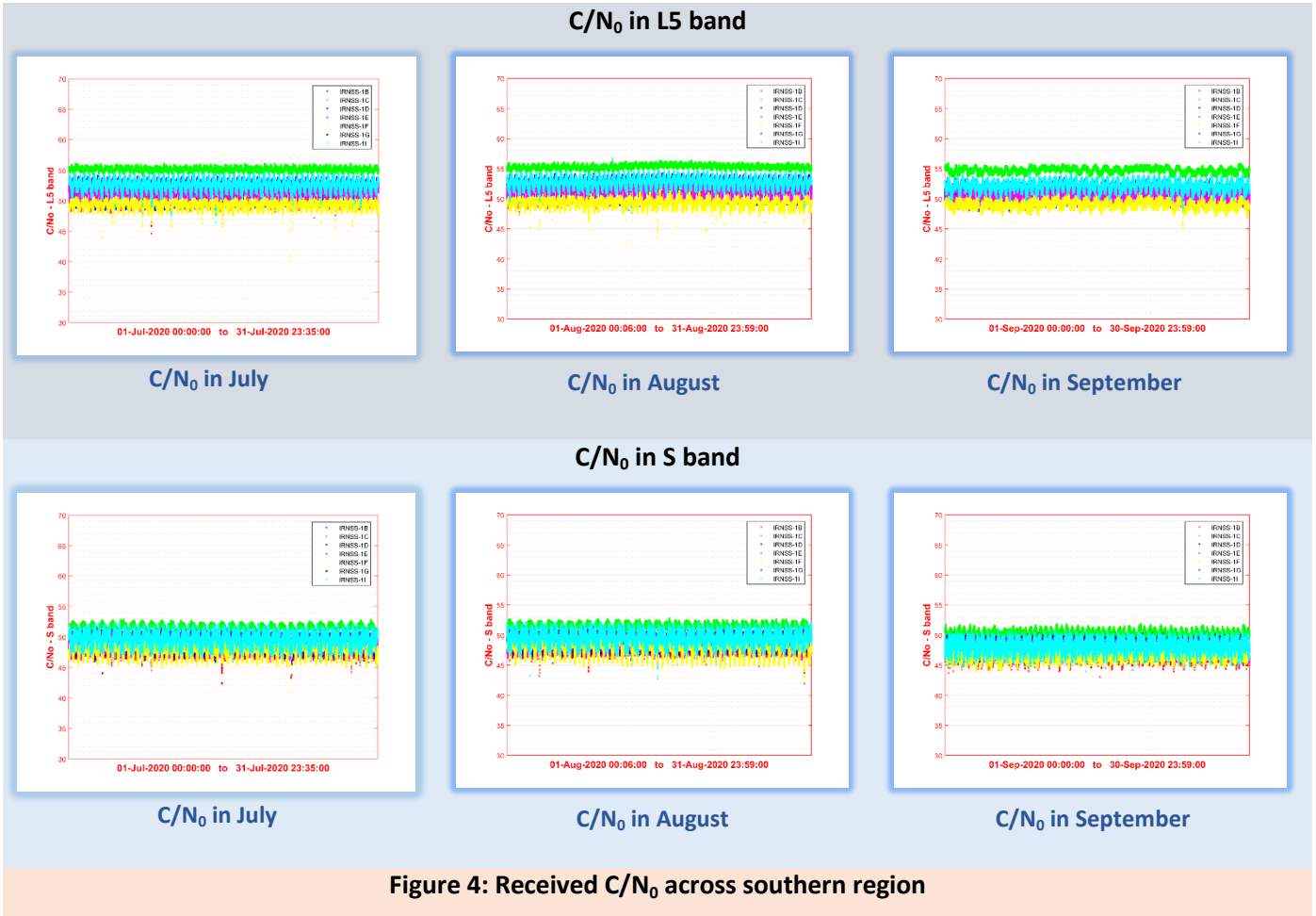
2.2. SATELLITE AVAILABILITY



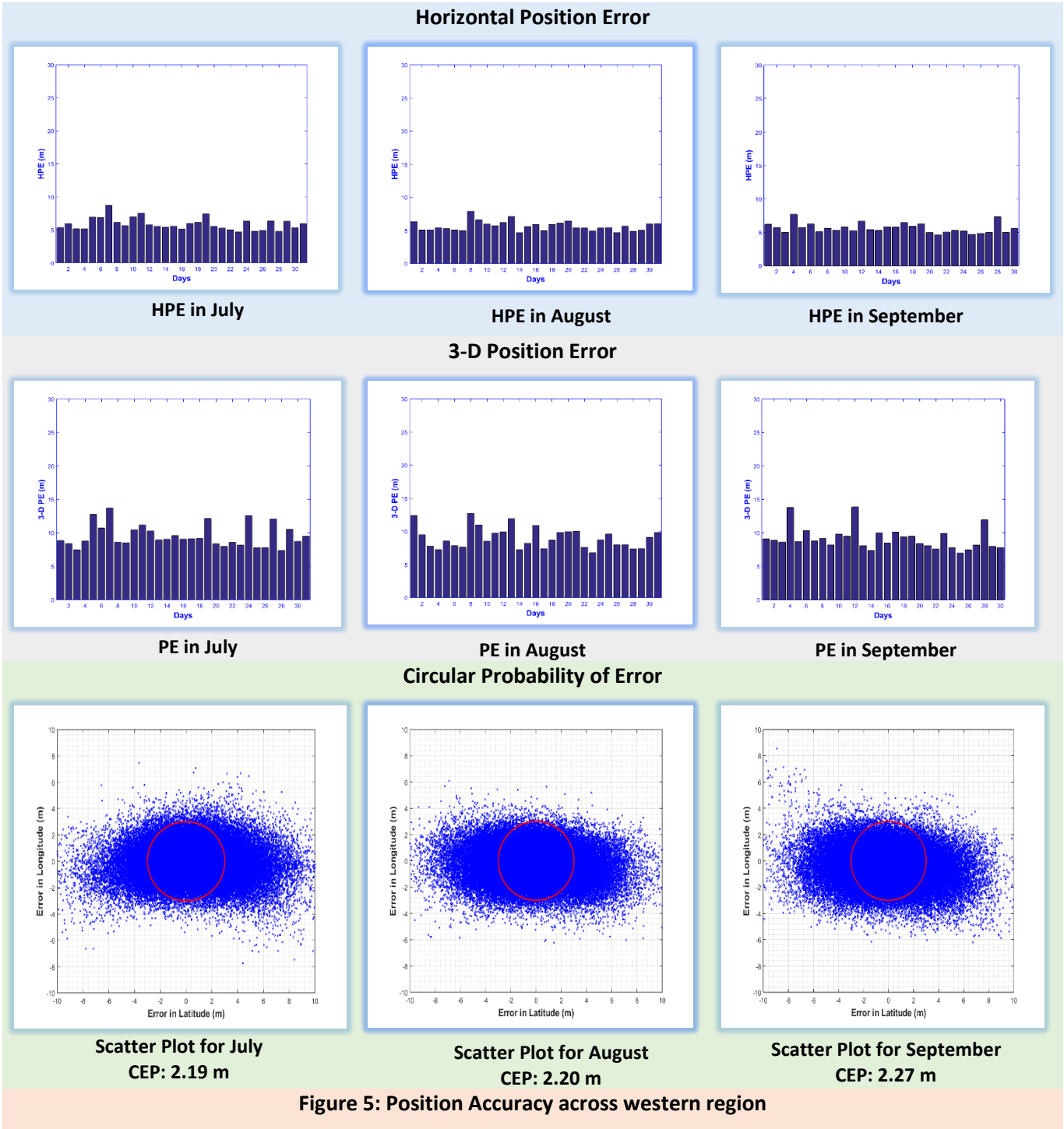
2.3. DILUTION OF PRECISION STATISTICS



2.4. CARRIER TO NOISE RATIO



3.1 SIGNAL IN SPACE ACCURACY



3.2 SATELLITE AVAILABILITY

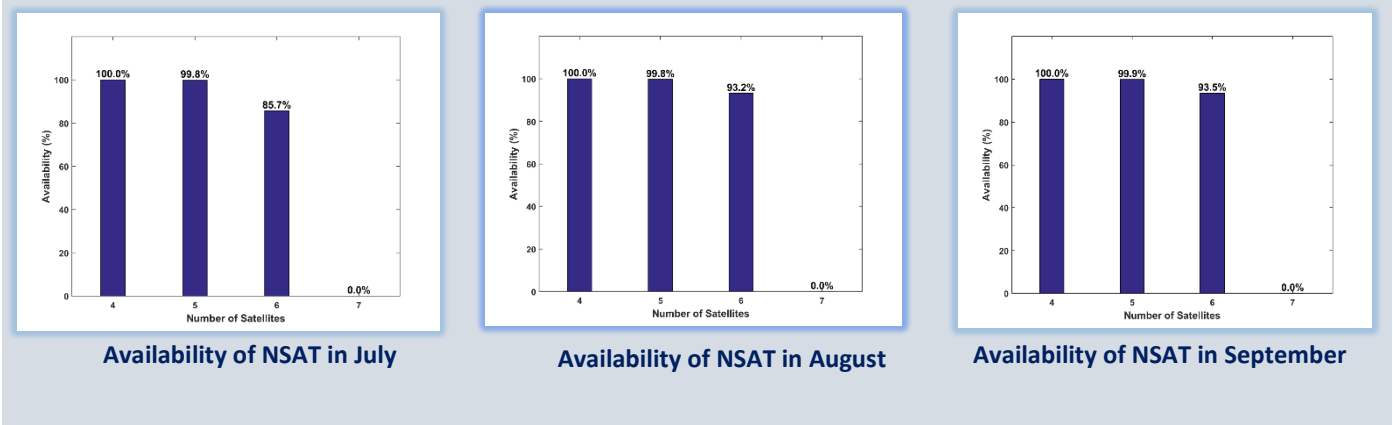


Figure 6: Percentage availability of number of SVs for SPS service in western region

3.3 DILUTION OF PRECISION STATISTICS

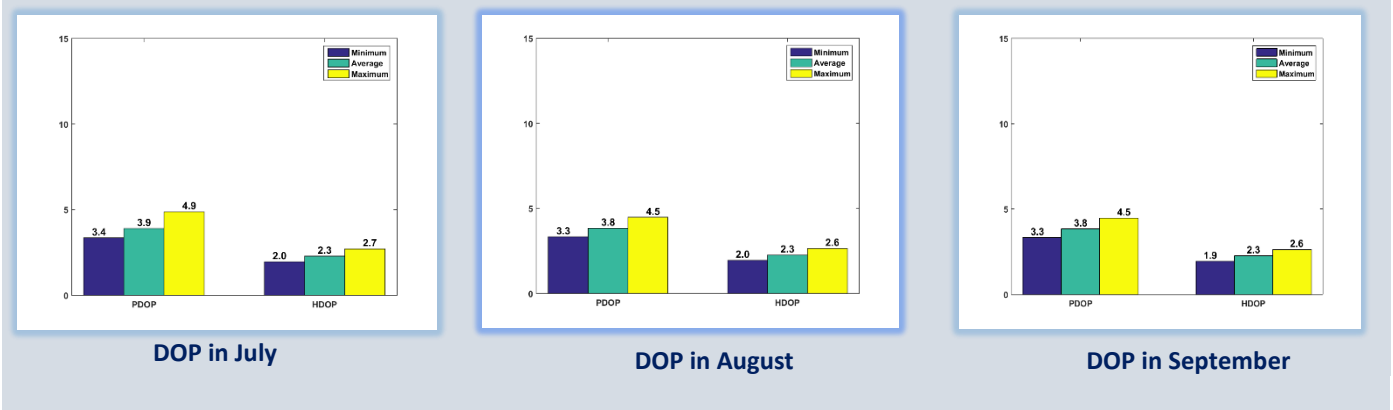
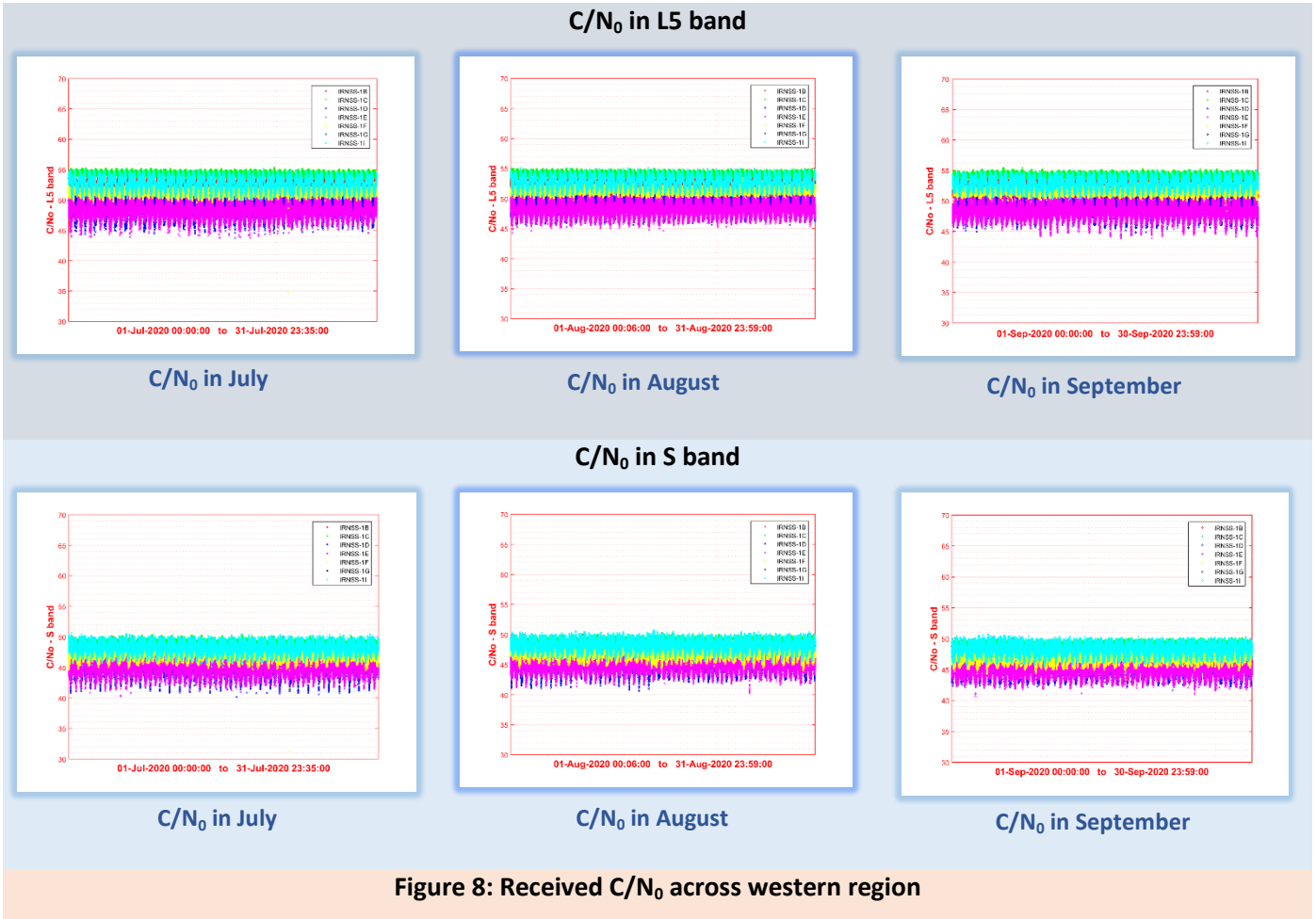
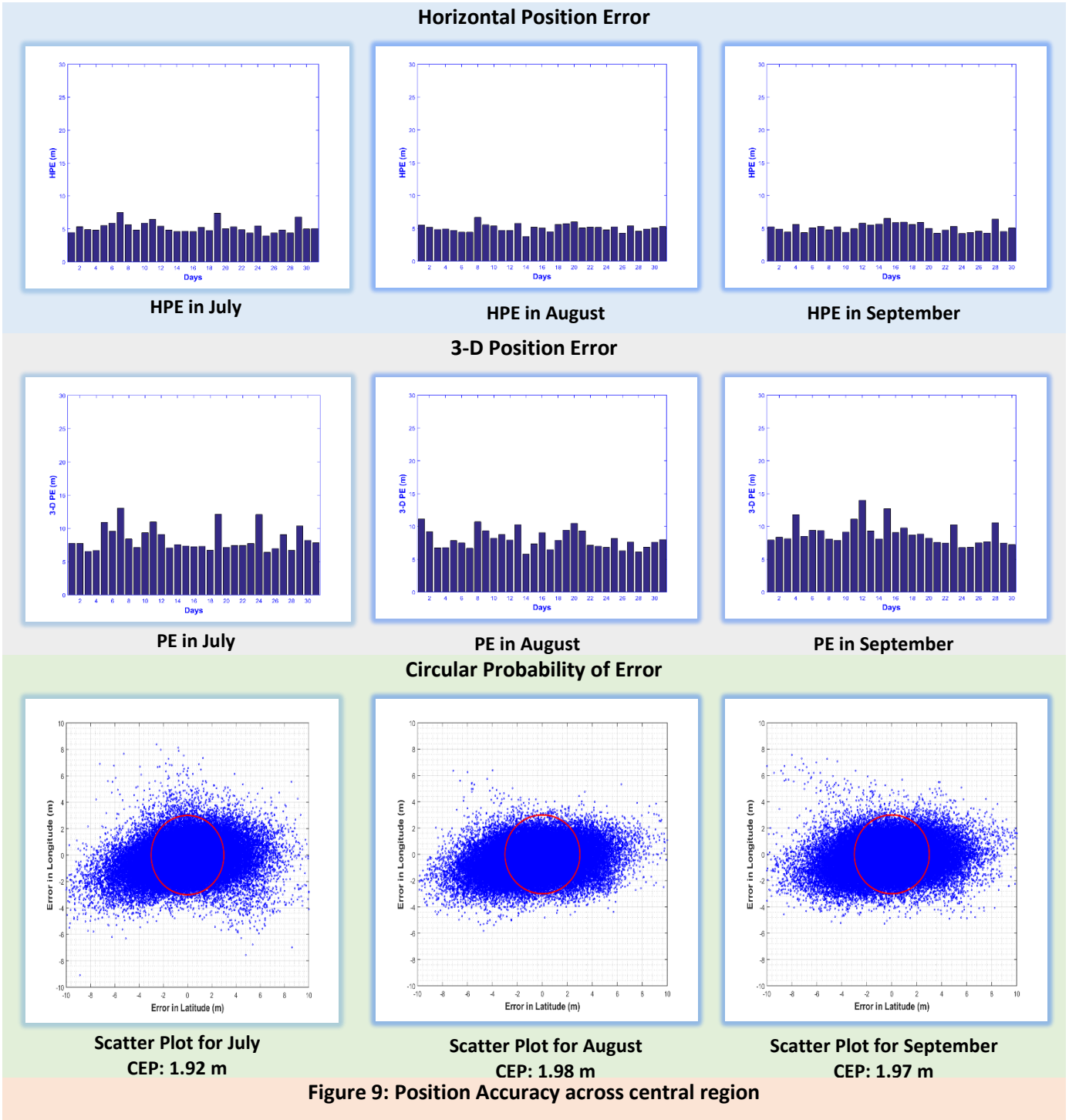


Figure 7: DOP statistics across western region

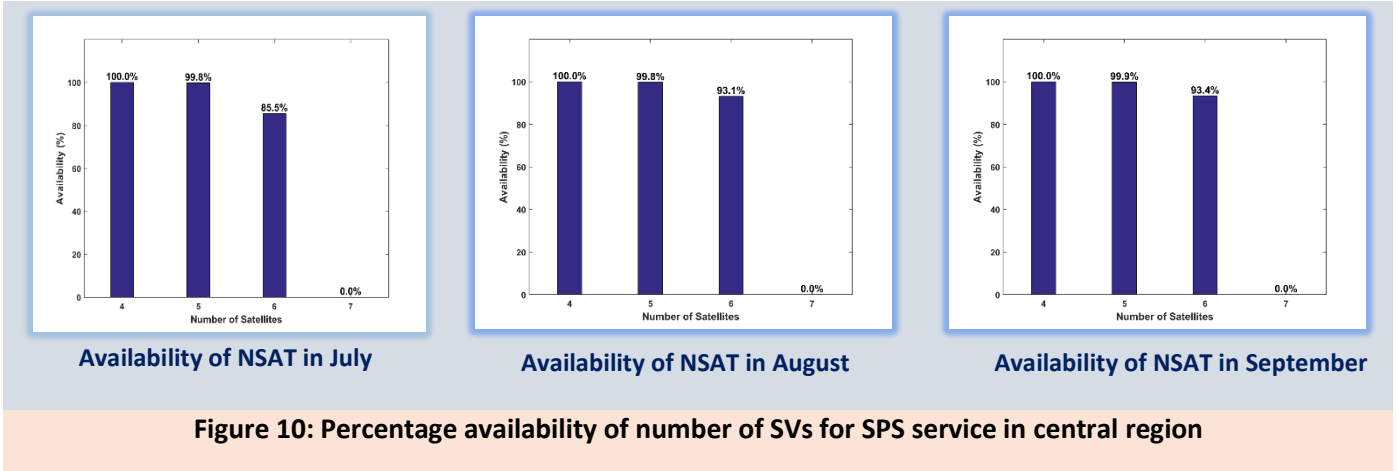
3.4 CARRIER TO NOISE RATIO



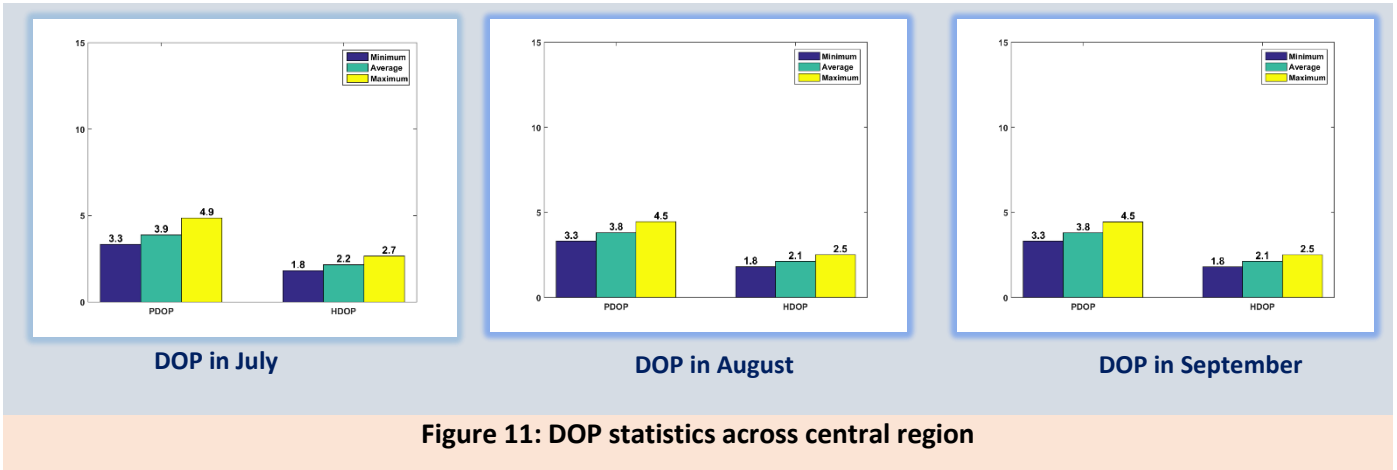
4.1 SIGNAL IN SPACE ACCURACY



4.2 SATELLITE AVAILABILITY



4.3 DILUTION OF PRECISION STATISTICS



4.4 CARRIER TO NOISE RATIO

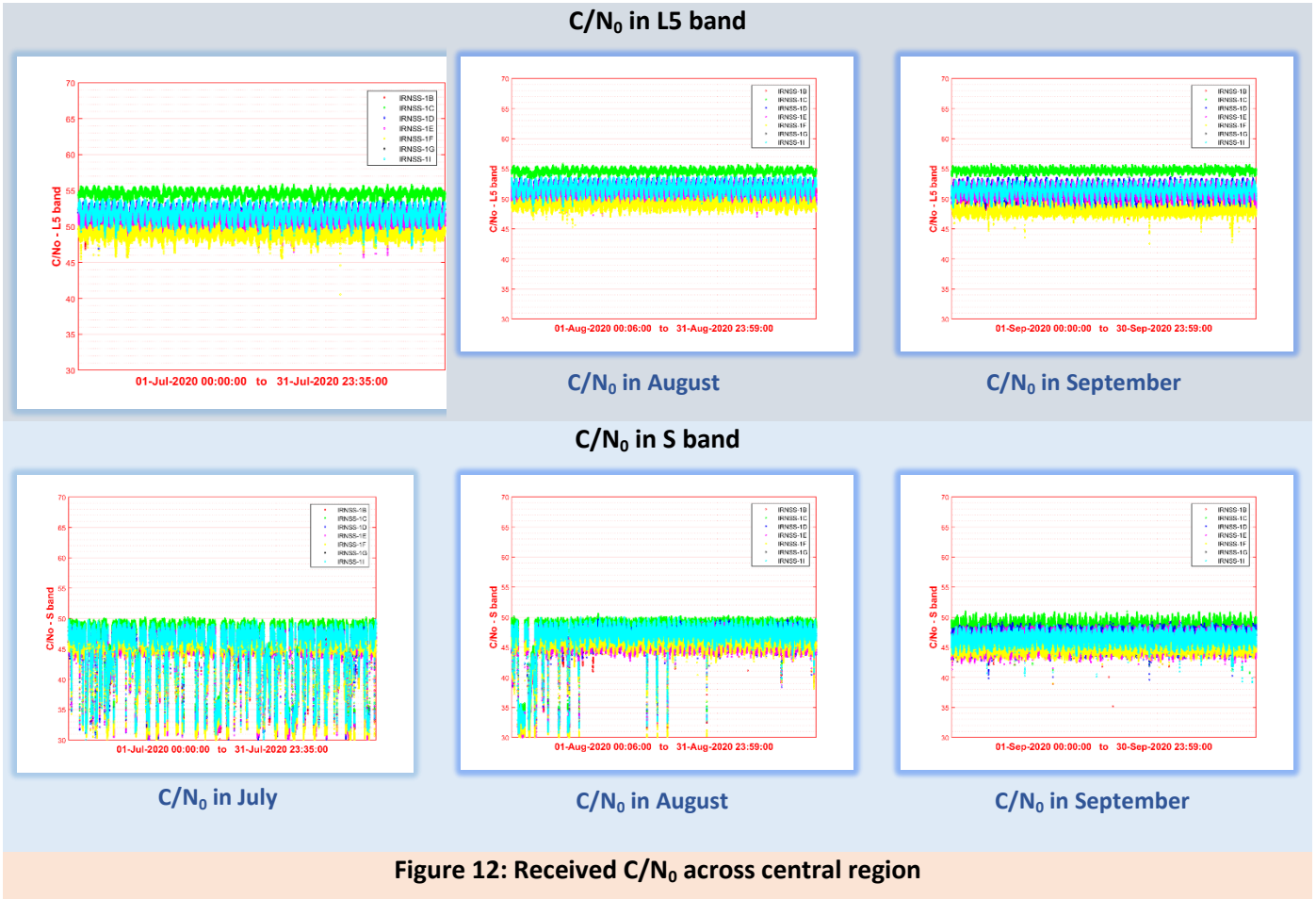


Figure 12: Received C/N₀ across central region

NOTE:

Occasional drop in C/N₀ is observed due to local interference.

5.1 SIGNAL IN SPACE ACCURACY

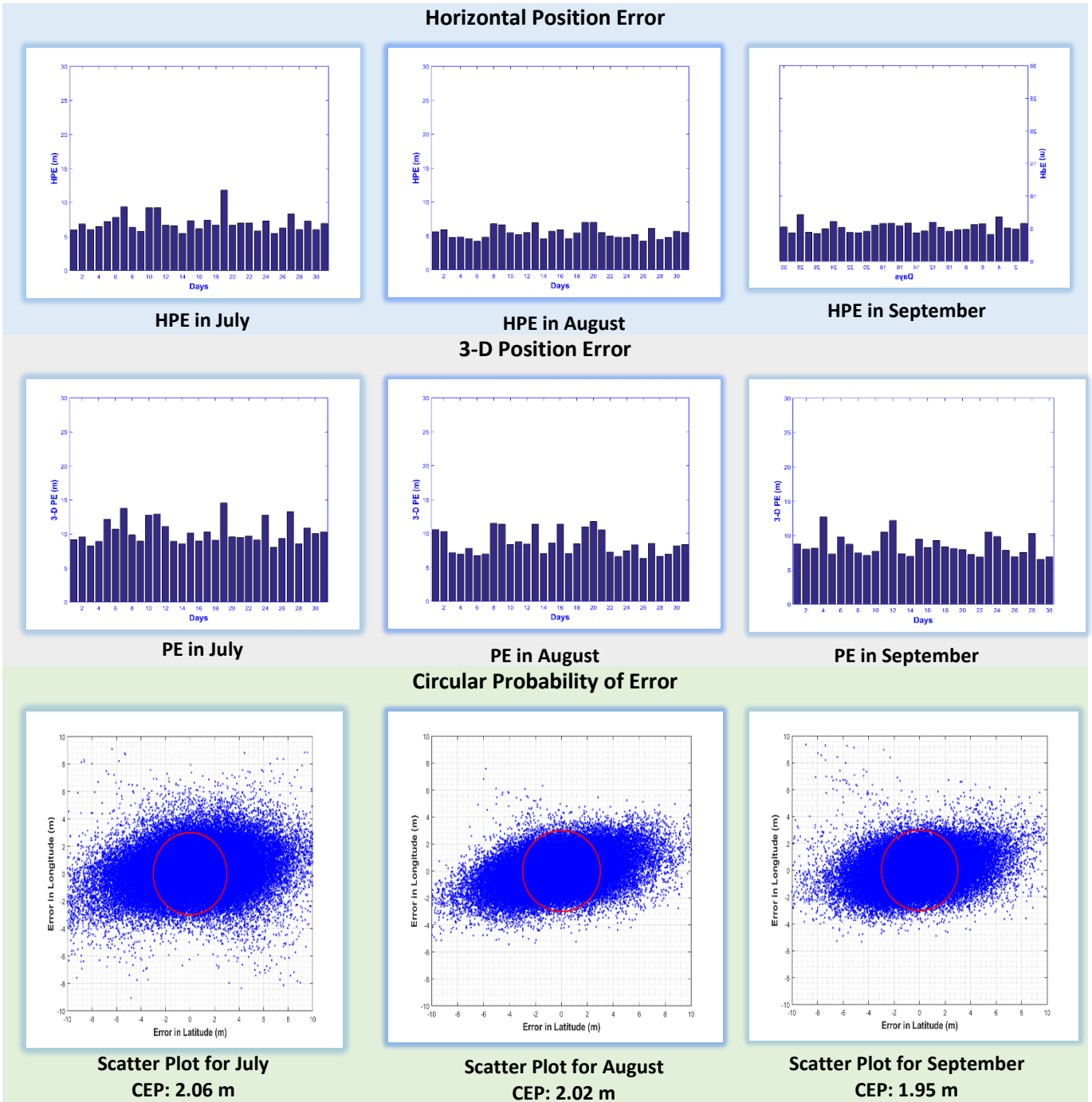
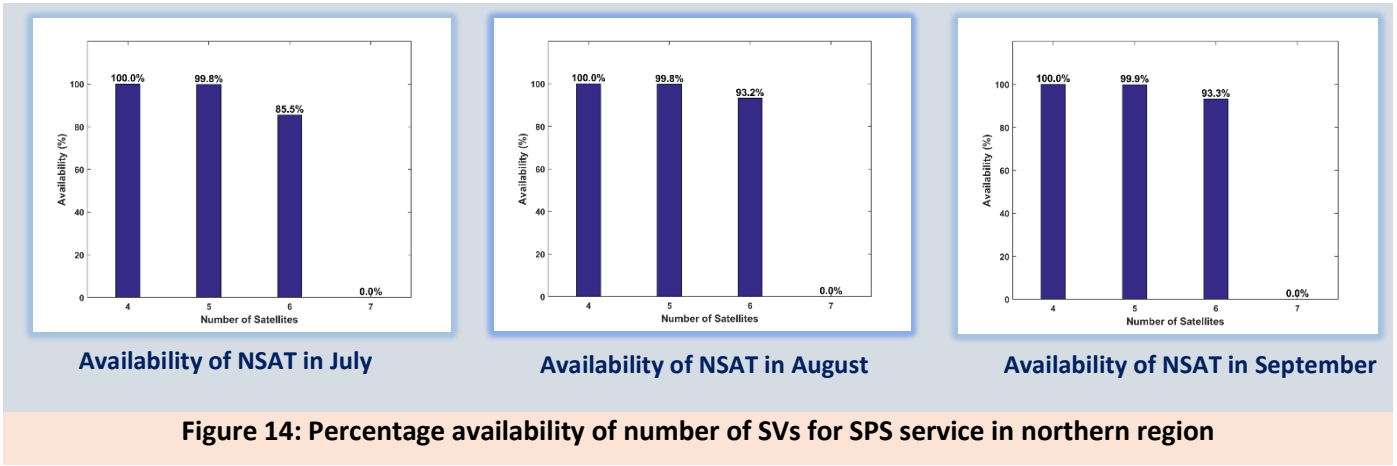
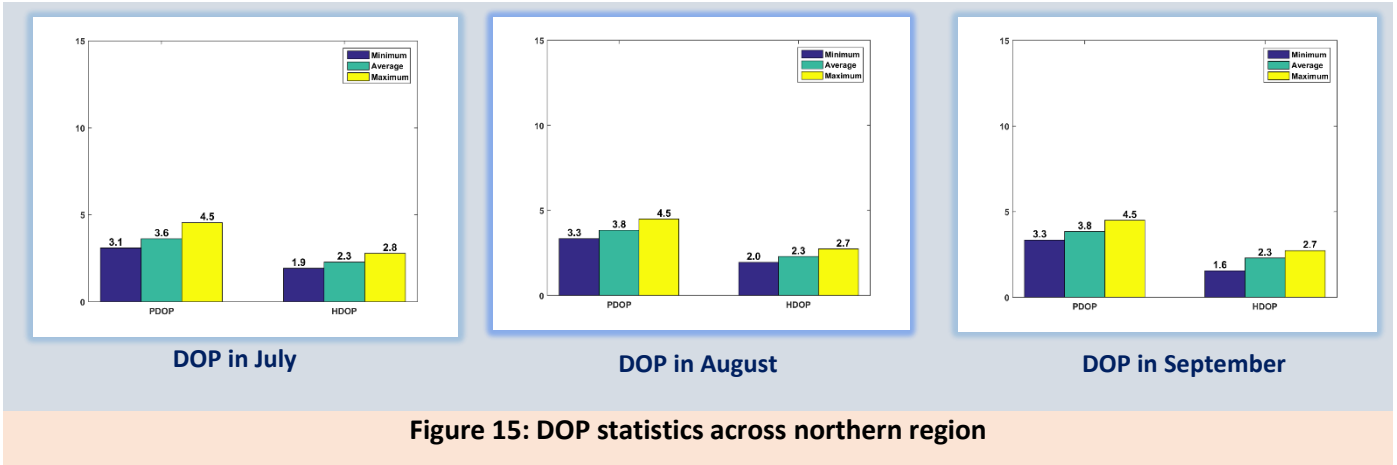


Figure 13: Position Accuracy across northern region

5.2 SATELLITE AVAILABILITY



5.3 DILUTION OF PRECISION STATISTICS



5.4 CARRIER TO NOISE RATIO

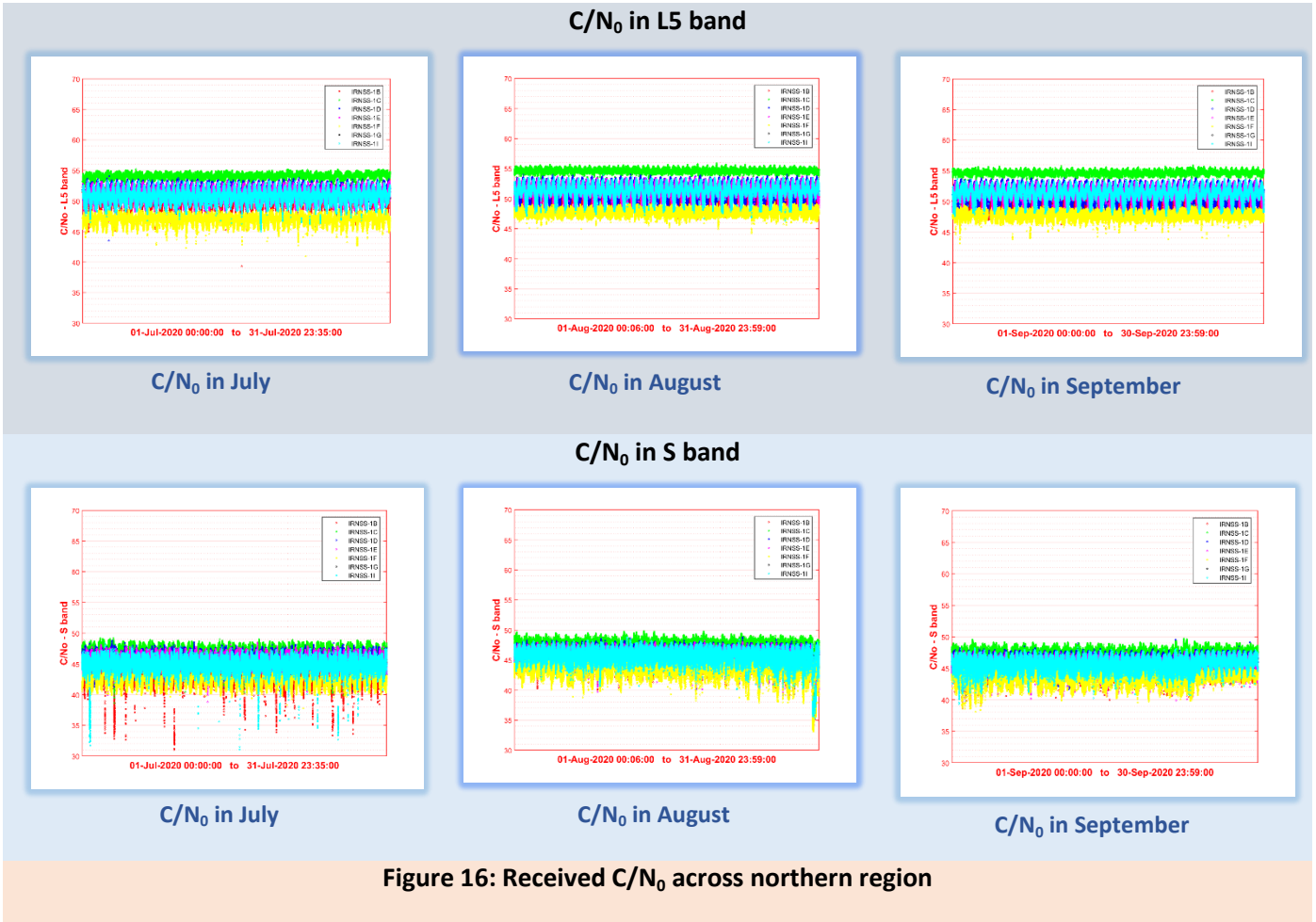
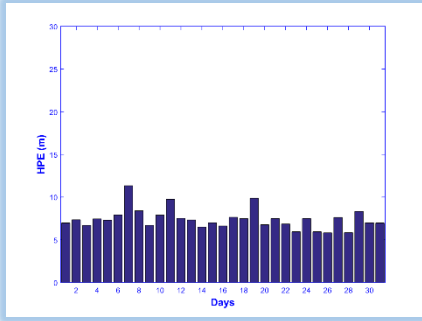


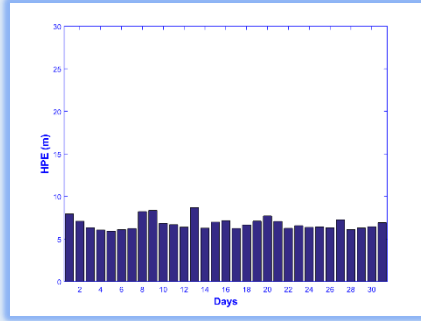
Figure 16: Received C/N₀ across northern region

6.1 SIGNAL IN SPACE ACCURACY

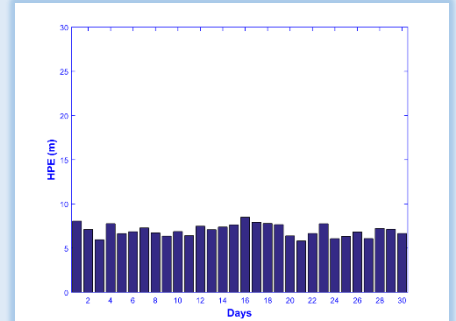
Horizontal Position Error



HPE in July

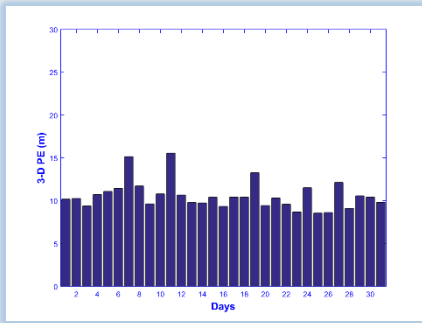


HPE in August

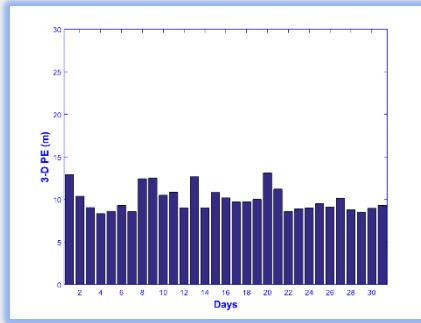


HPE in September

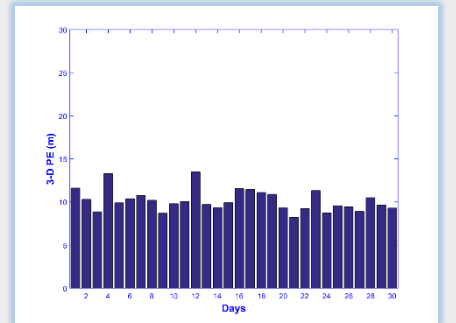
3-D Position Error



PE in July

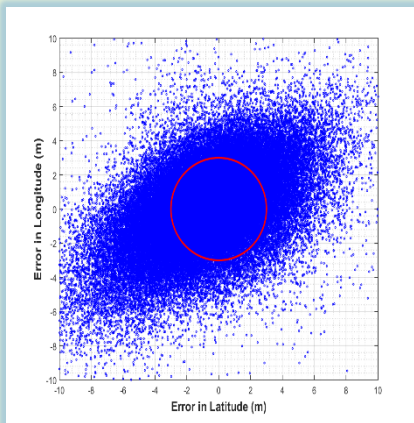


PE in August

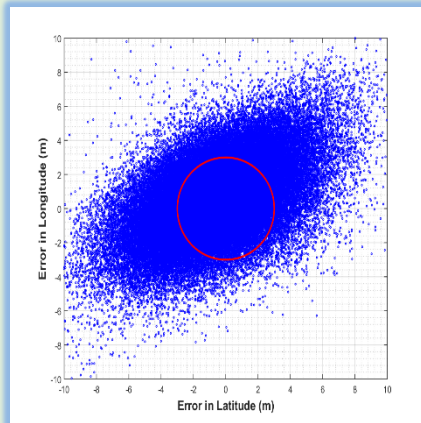


PE in September

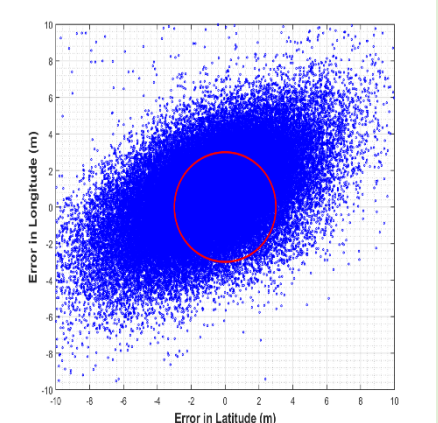
Circular Probability of Error



Scatter Plot for July
CEP: 2.86 m



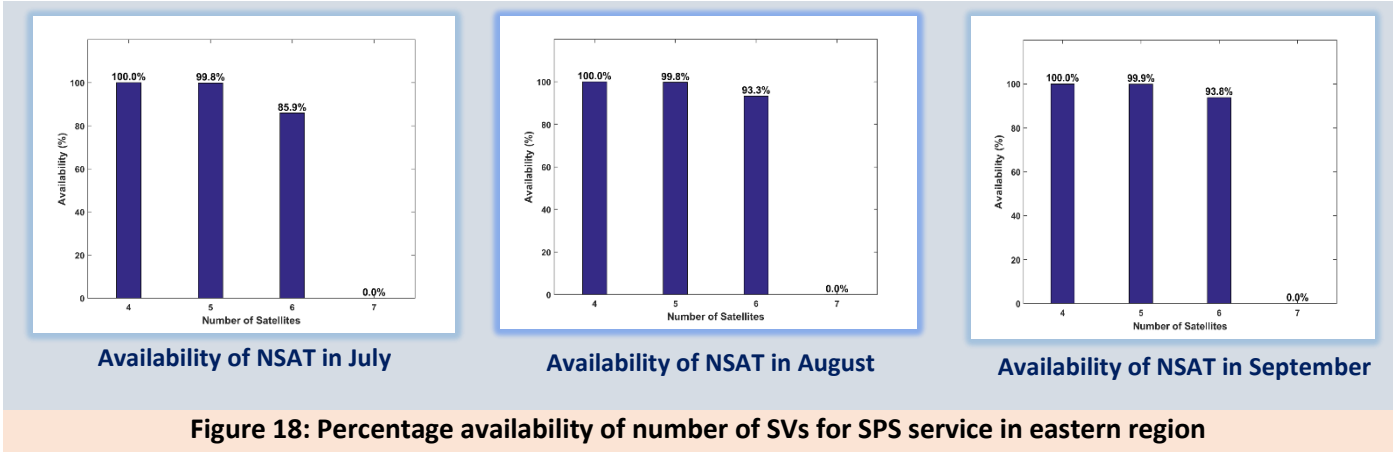
Scatter Plot for August
CEP: 2.86 m



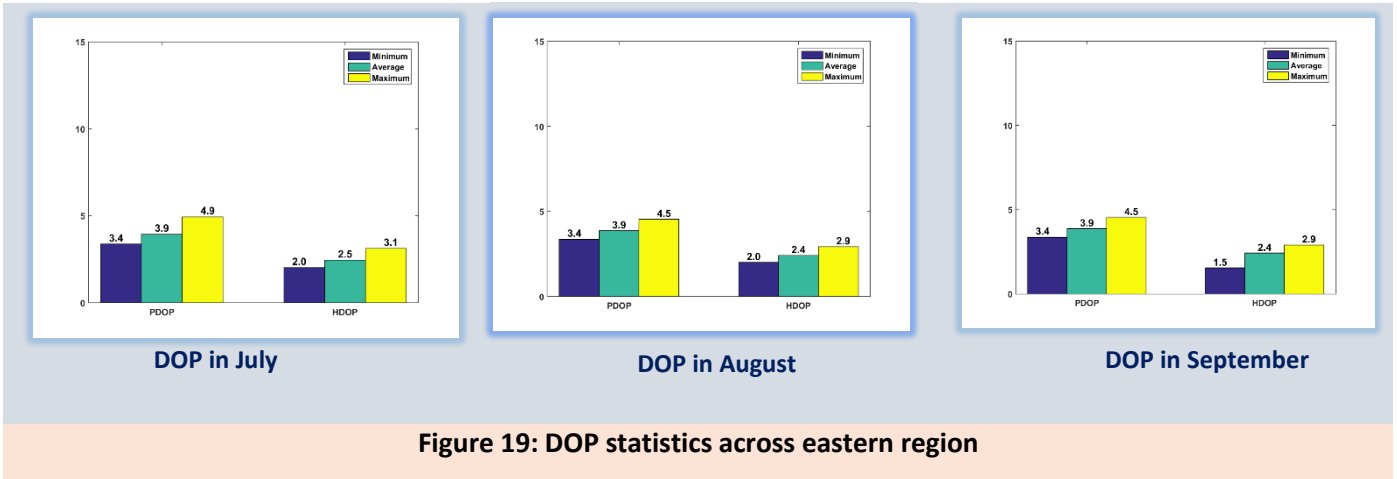
Scatter Plot for September
CEP: 2.89 m

Figure 17: Position Accuracy across eastern region

6.2 SATELLITE AVAILABILITY



6.3 DILUTION OF PRECISION STATISTICS



6.4 CARRIER TO NOISE RATIO

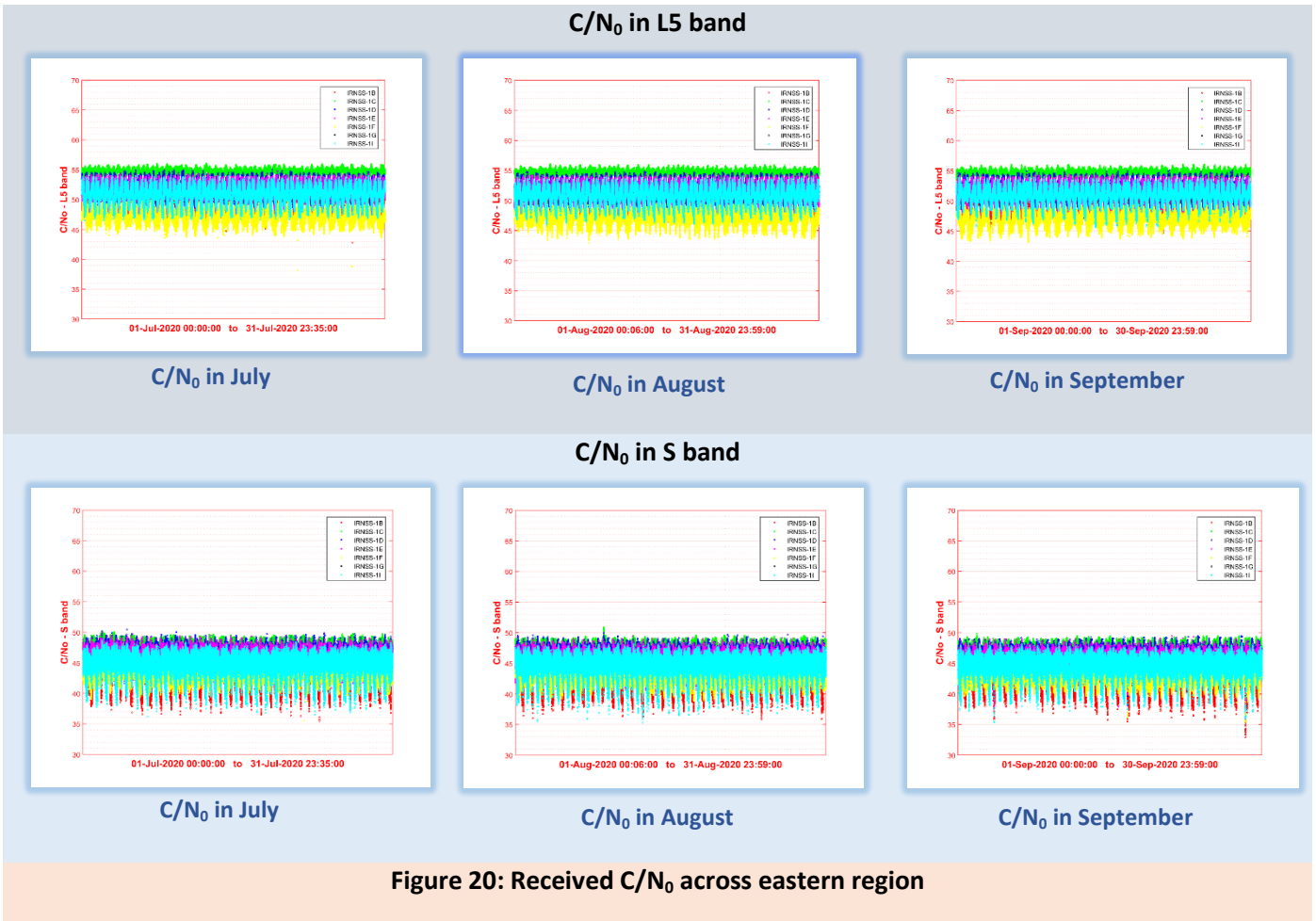


Figure 20: Received C/N₀ across eastern region